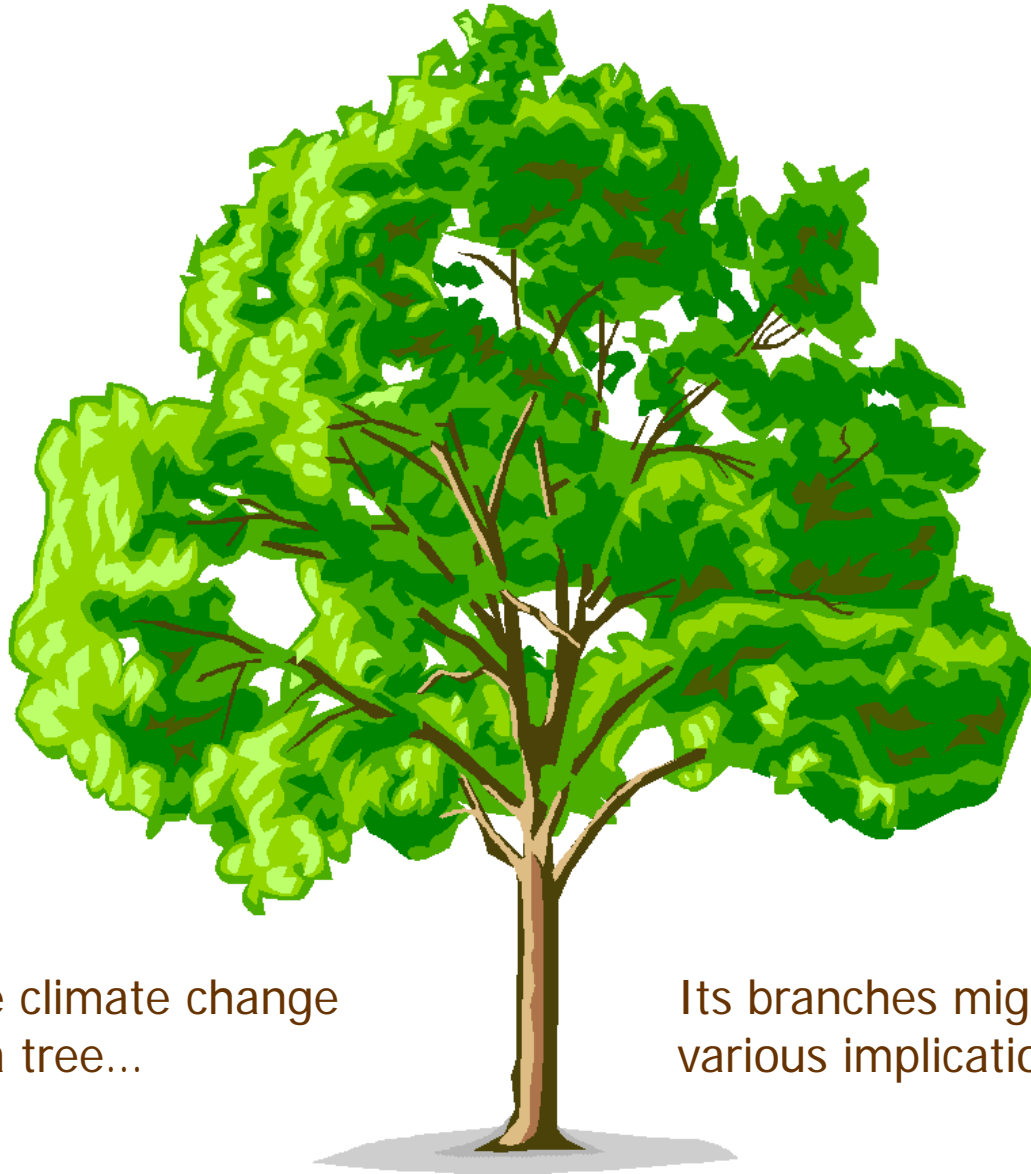


Climate Change Decision Tree

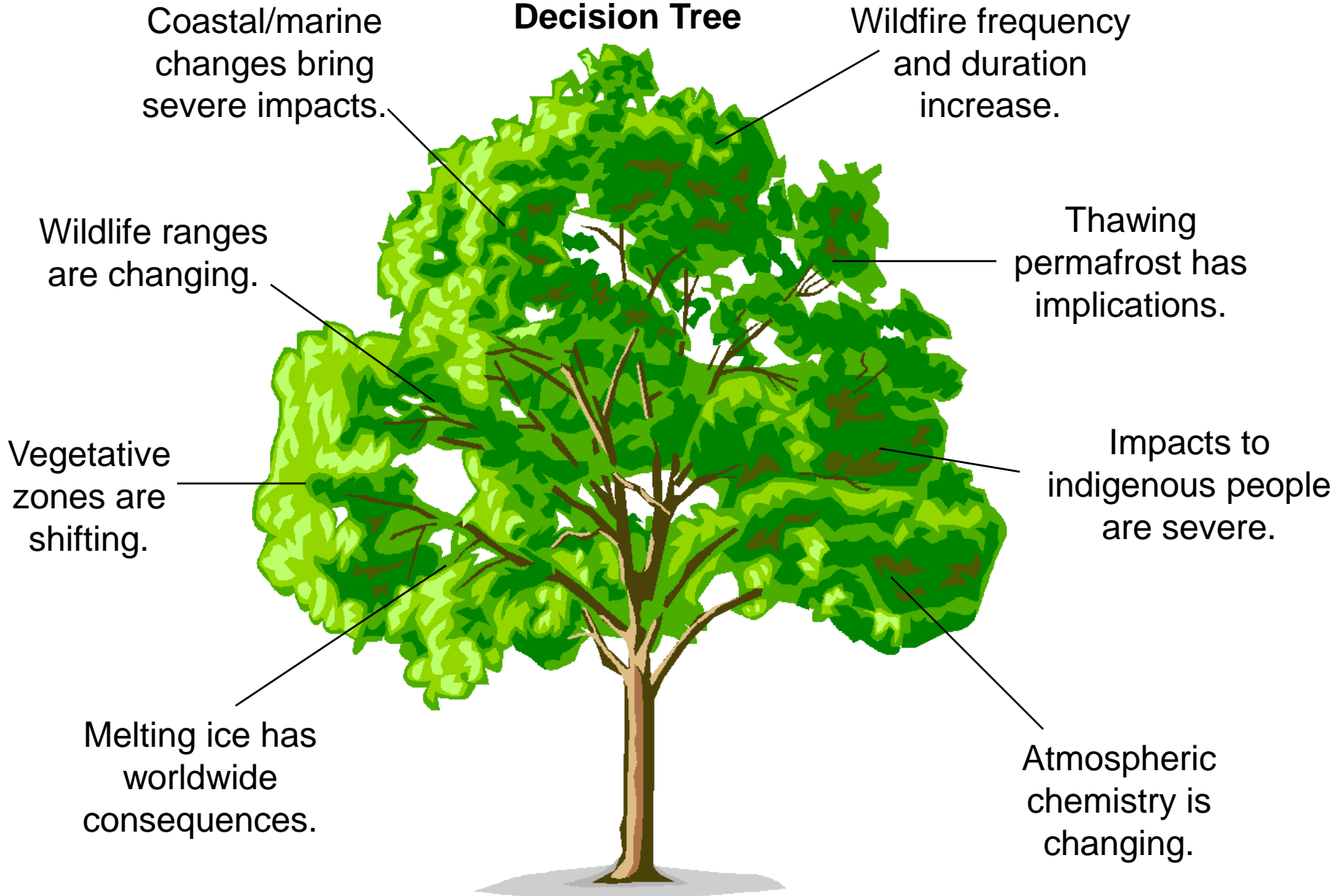
An Analogy...



Let's examine climate change
as if it were a tree...

Its branches might represent the
various implications of change...

Climate Change Decision Tree



The branches represent categories of impacts from climate change.

Climate Change Decision Tree

Coastal/marine changes bring severe impacts.

Wildfire frequency and duration increase.

Wildlife ranges are changing.

Thawing permafrost has implications.

Vegetative zones are shifting.

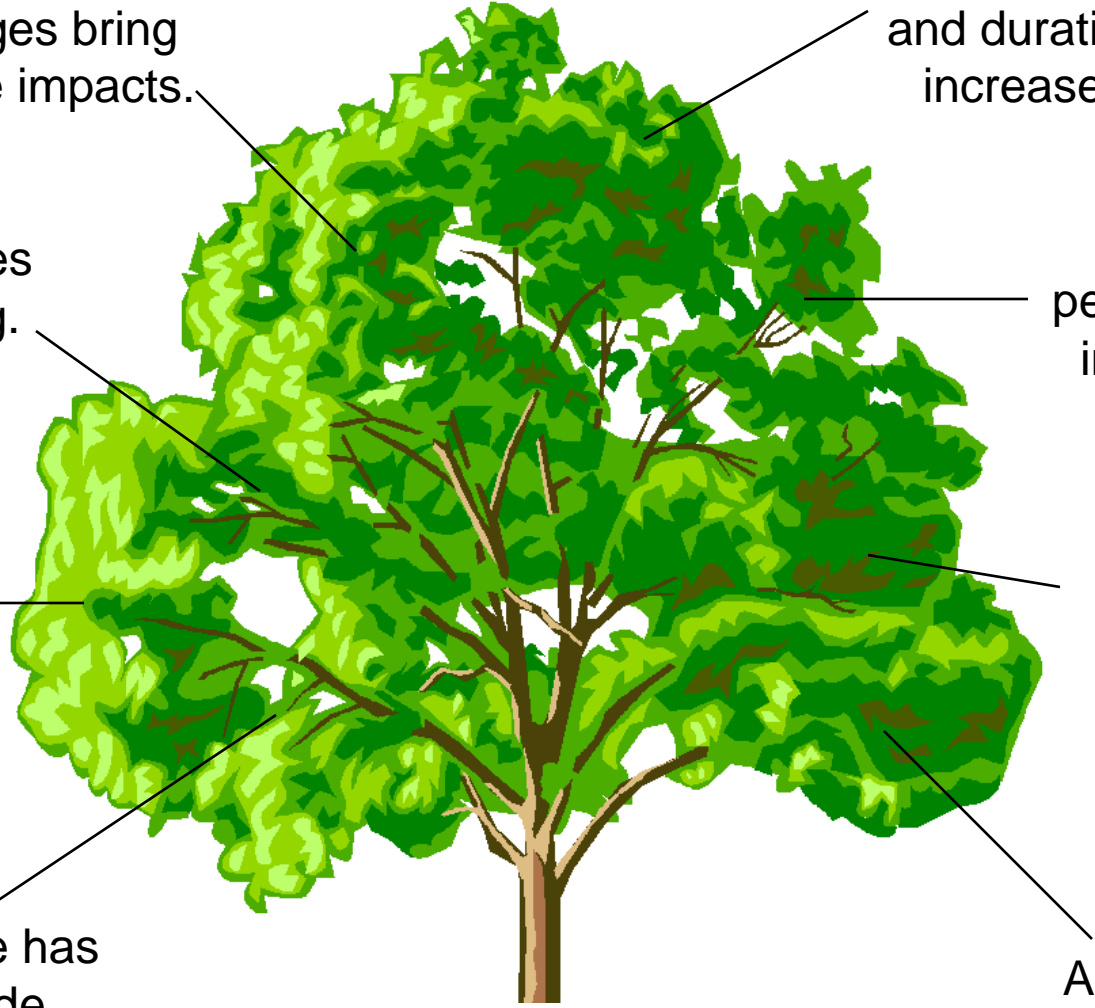
Impacts to indigenous people are severe.

Melting ice has worldwide consequences.

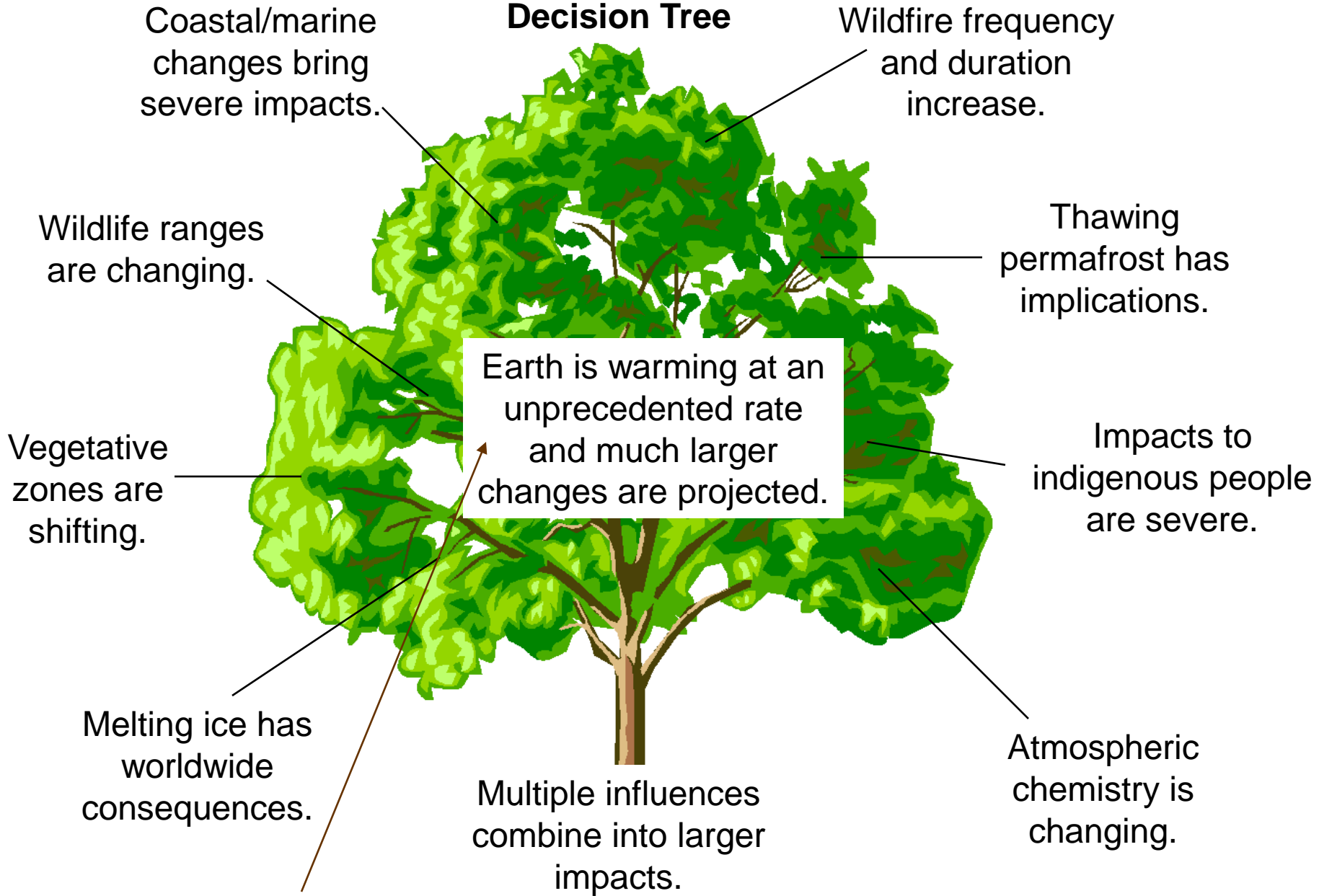
Atmospheric chemistry is changing.

Multiple influences combine into larger impacts.

The roots and trunk – their combined effects...

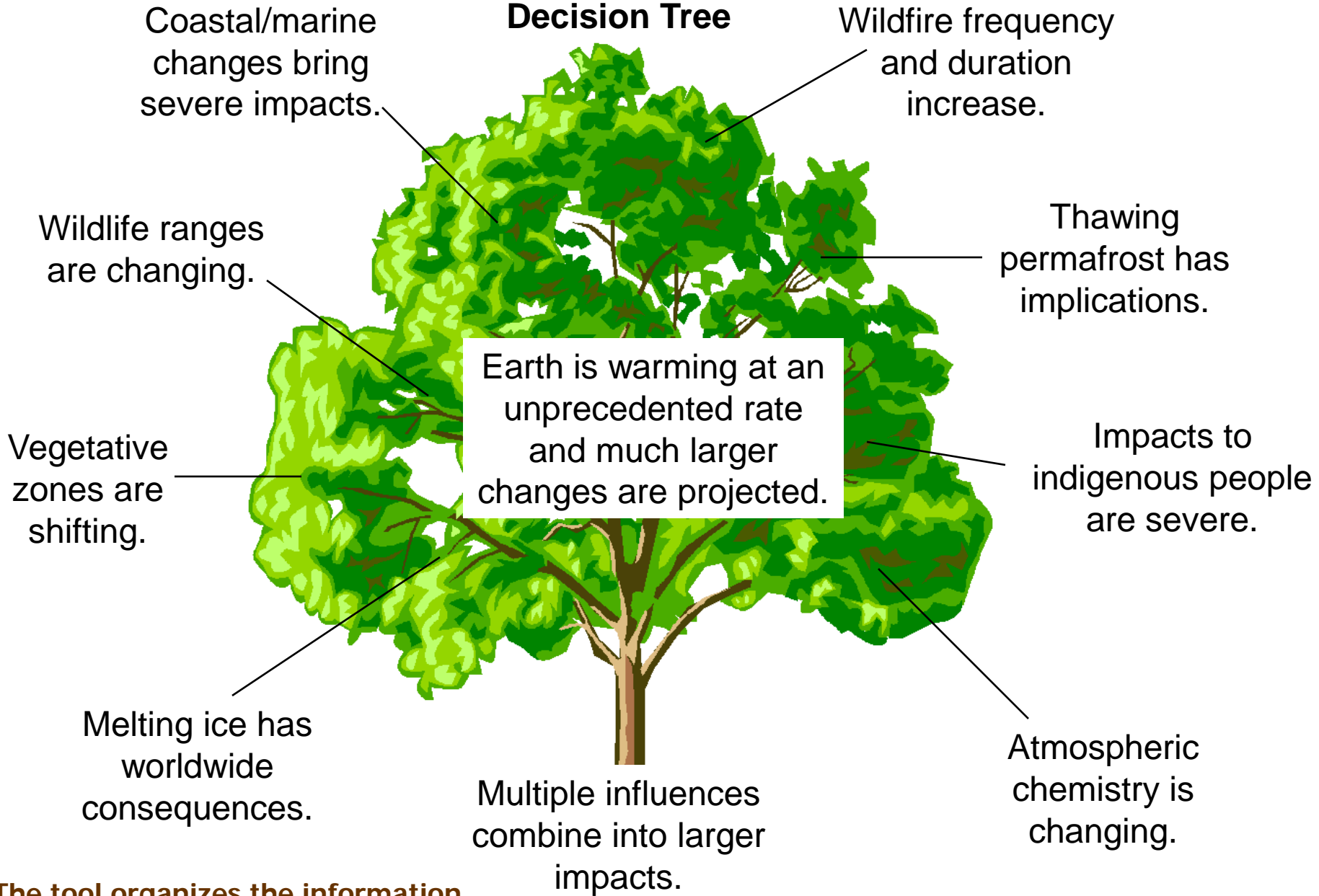


Climate Change Decision Tree



And there's the issue of "Climate Change" – the whole tree.

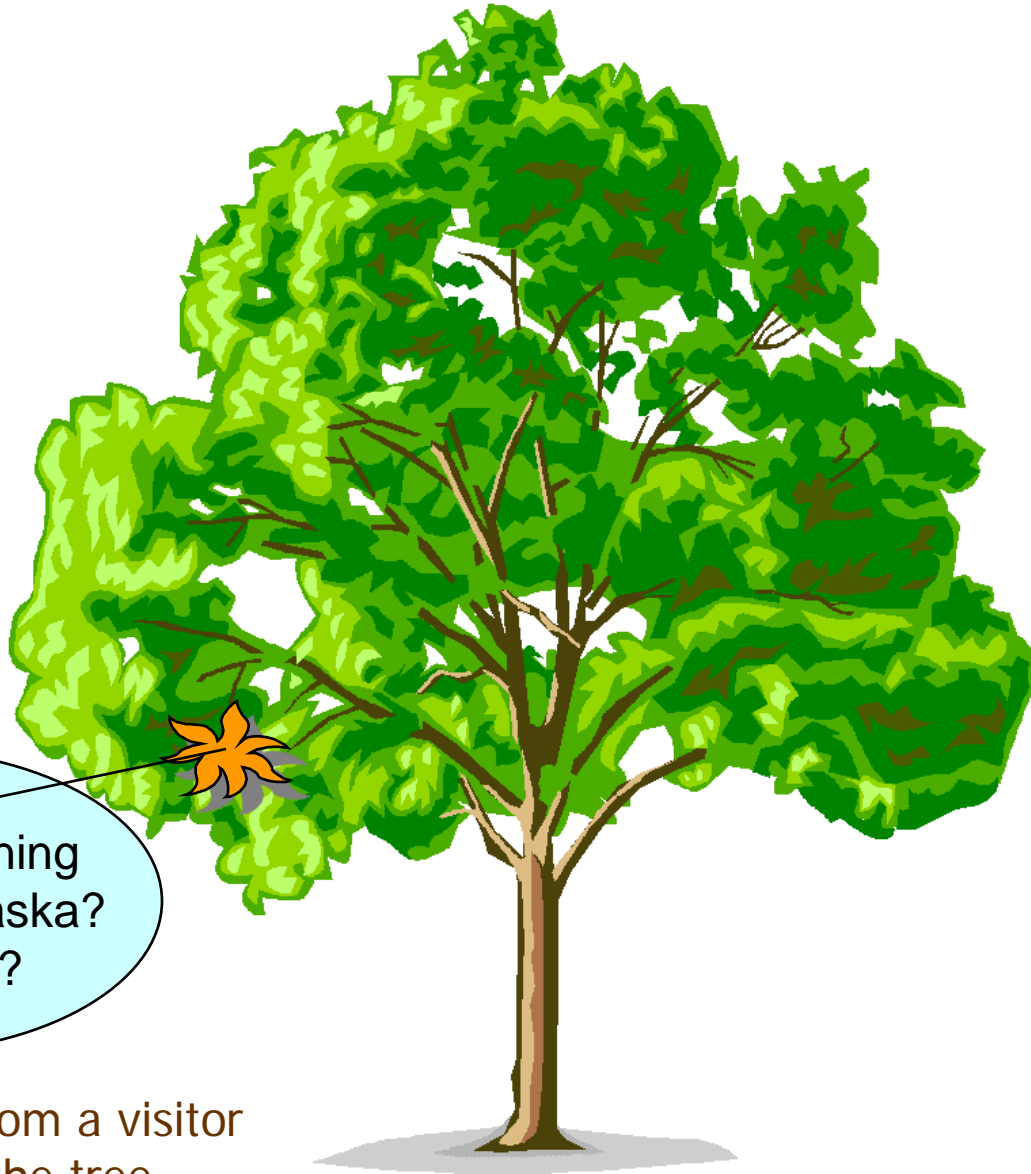
Climate Change Decision Tree



The tool organizes the information.

(Adapted from the key findings, ACIA 2004.)

Climate Change Decision Tree



What is happening
to glaciers in Alaska?
In the World?

Each question from a visitor
is like a leaf on the tree...

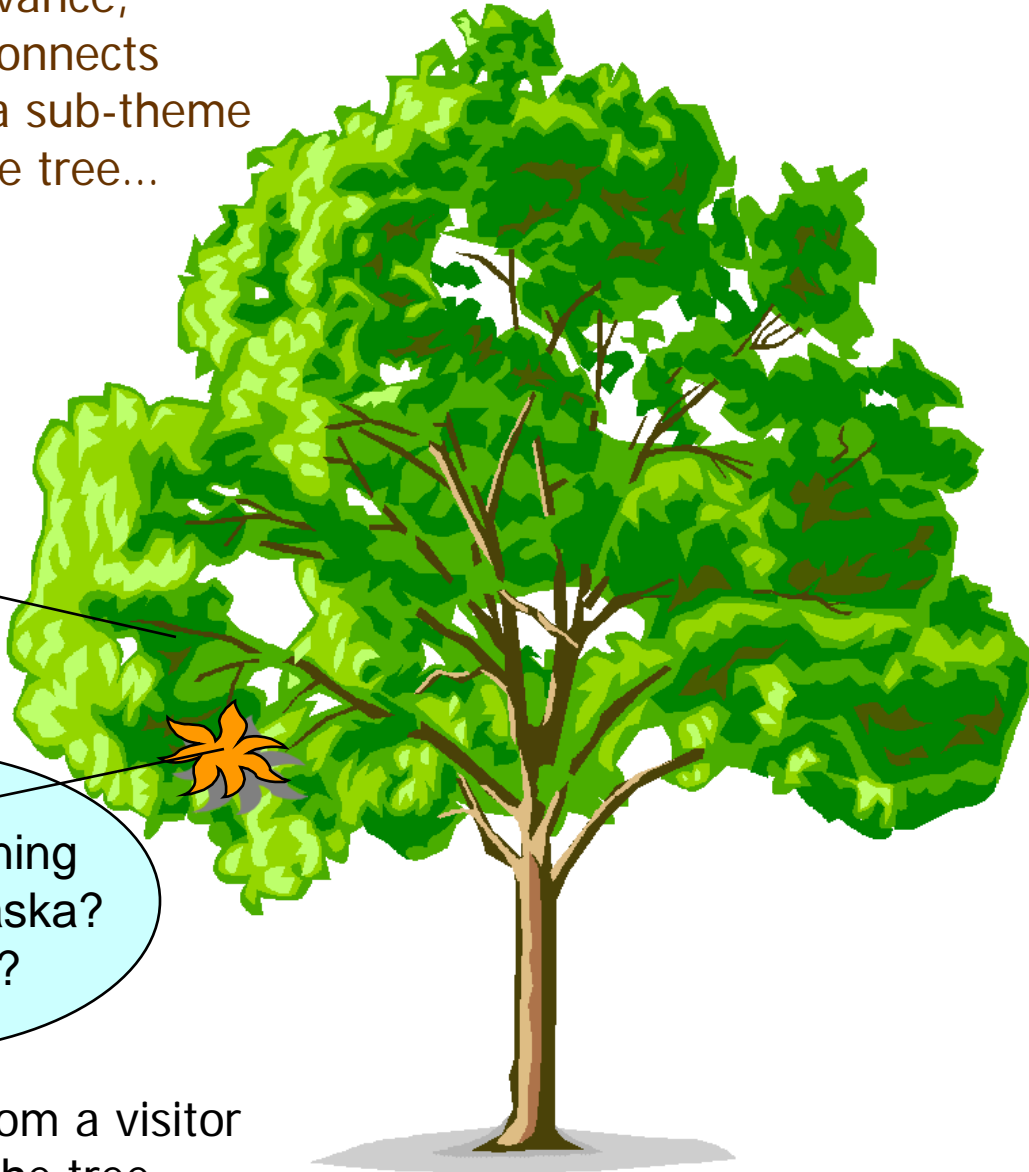
Climate Change Decision Tree

To establish relevance,
the interpreter connects
the question to a sub-theme
(a branch) on the tree...

Melting ice has
worldwide
consequences.

What is happening
to glaciers in Alaska?
In the World?

Each question from a visitor
is like a leaf on the tree...



Climate Change Decision Tree

To establish relevance,
the interpreter connects
the question to a sub-theme
(a branch) on the tree...

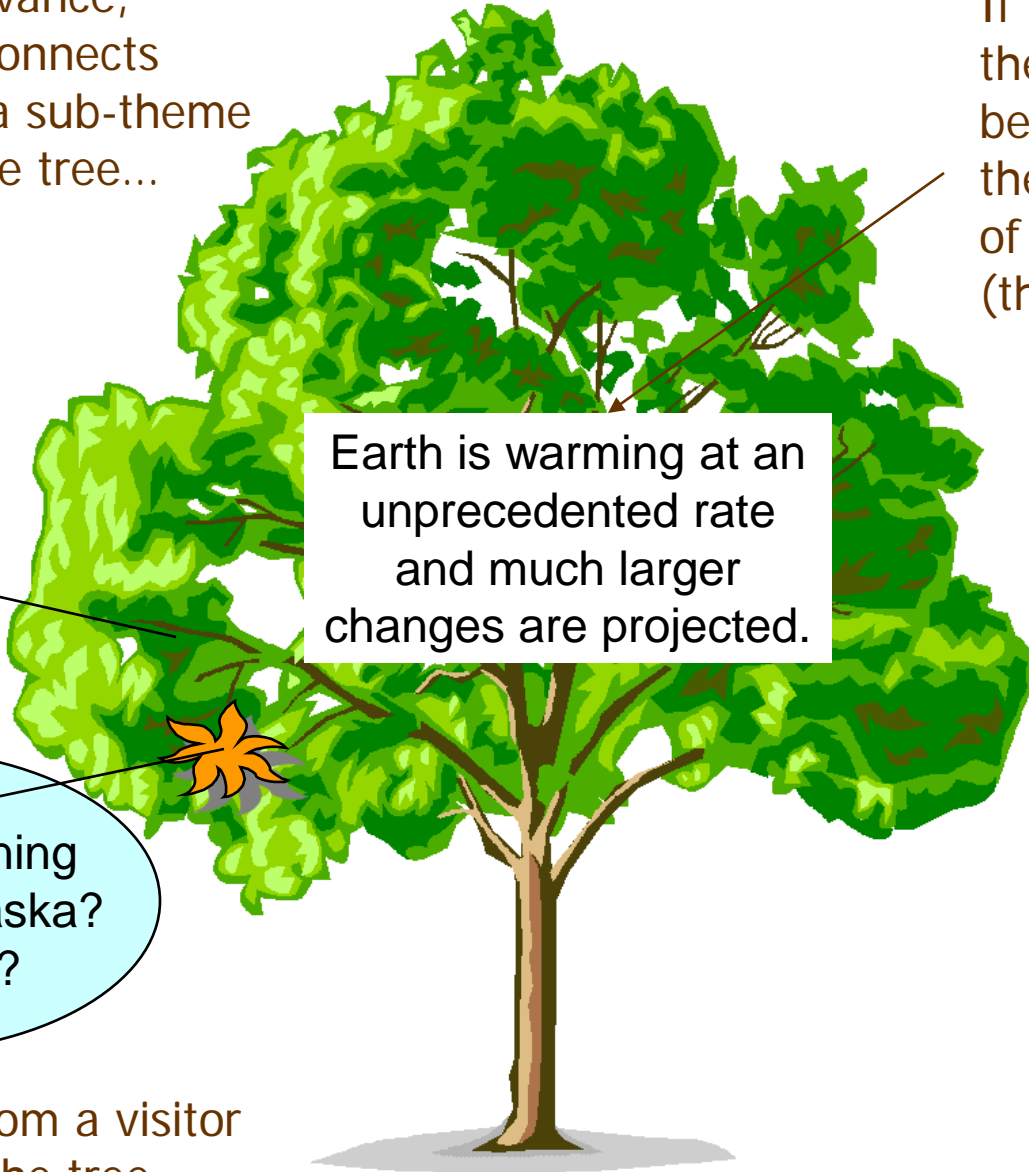
If many instances,
the visitor may also
become connected to
the full significance
of climate change
(the whole tree)...

Melting ice has
worldwide
consequences.

Earth is warming at an
unprecedented rate
and much larger
changes are projected.

What is happening
to glaciers in Alaska?
In the World?

Each question from a visitor
is like a leaf on the tree...



Climate Change Decision Tree

To establish relevance, the interpreter connects the question to a sub-theme (a branch) on the tree...

If many instances, the visitor may also be connected to the overall significance of climate change (the whole tree)...

Melting ice has worldwide consequences.

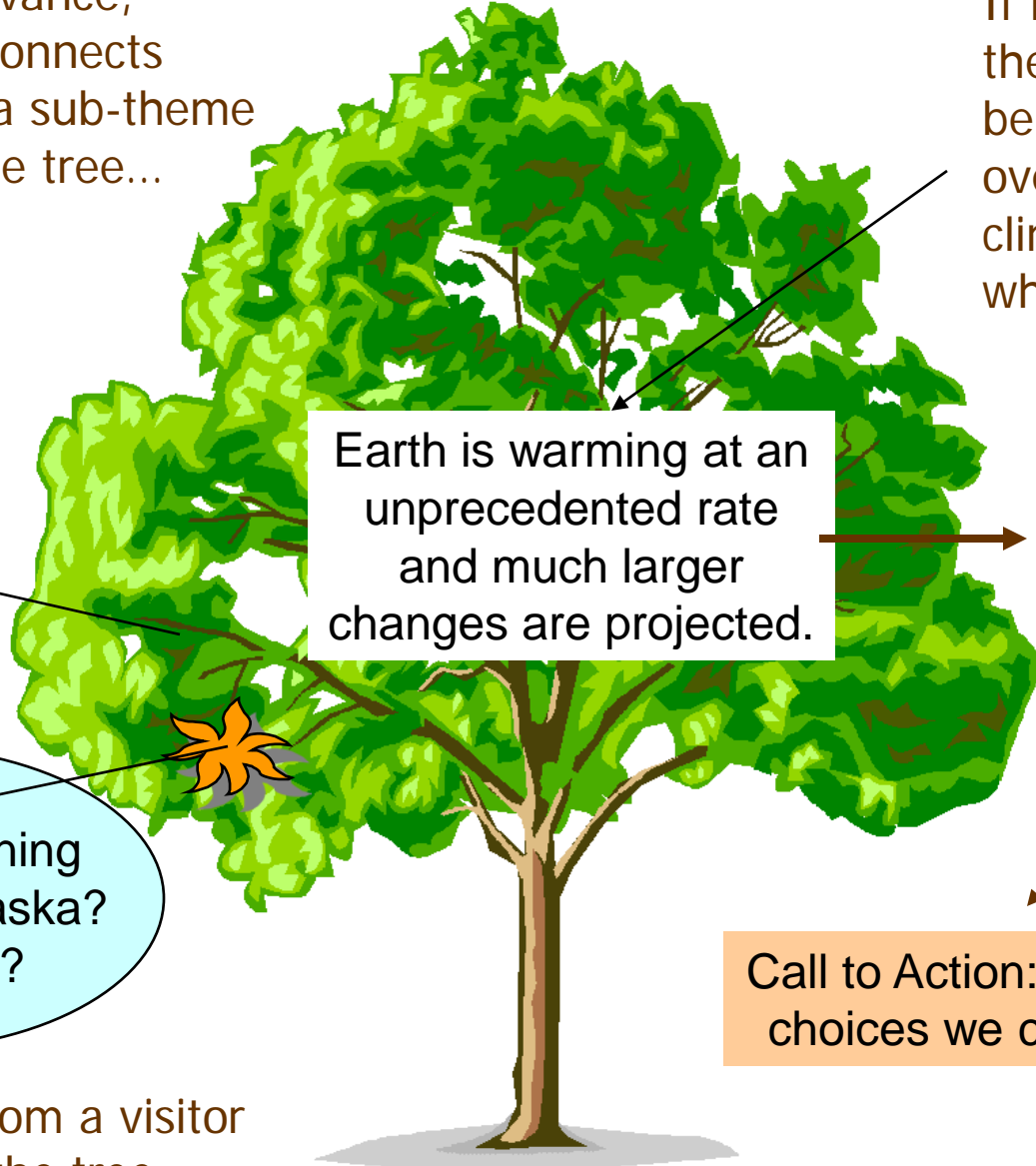
Earth is warming at an unprecedented rate and much larger changes are projected.

As the opportunity evolves enough, the interpreter may be able to offer a key message and invite stewardship.

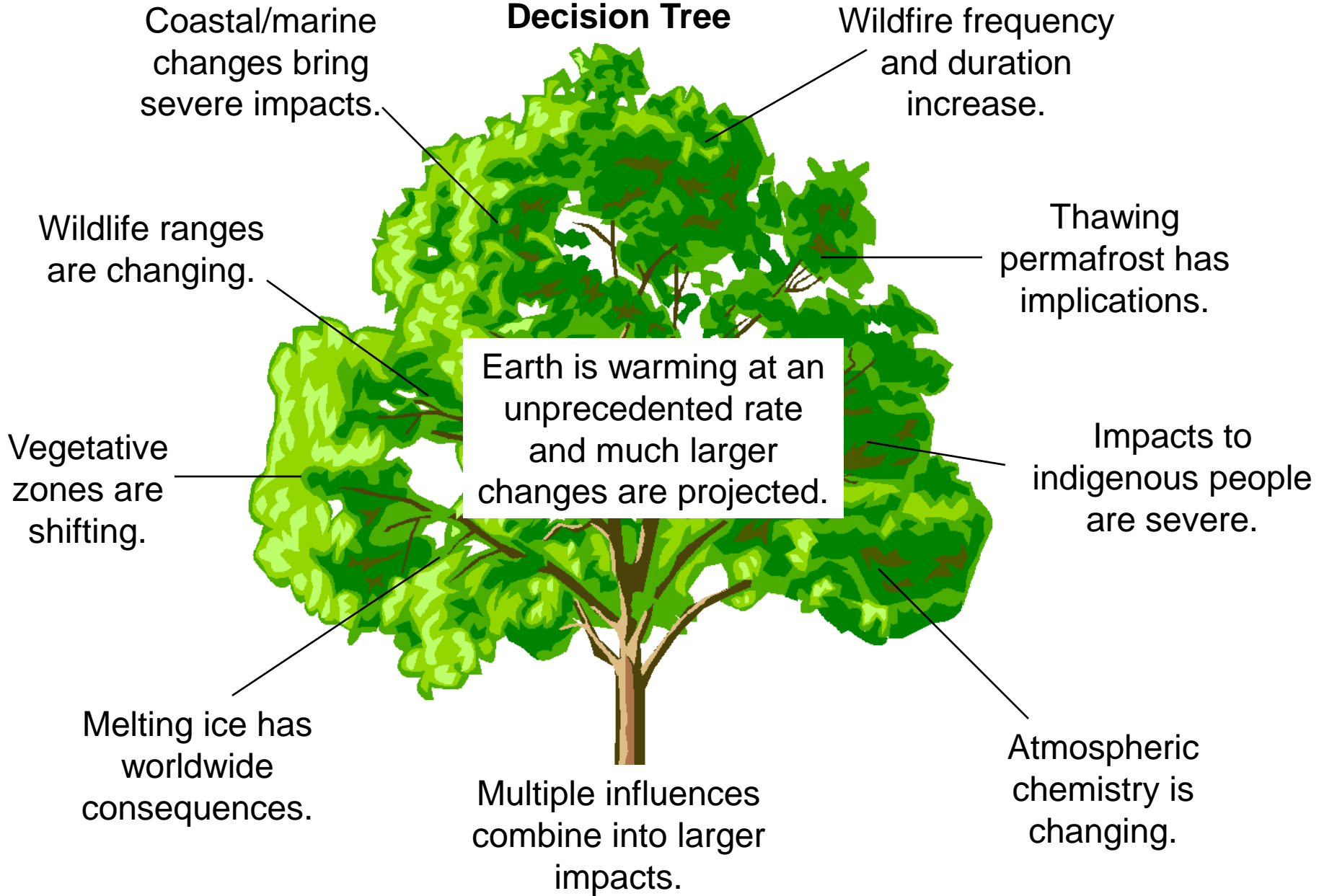
What is happening to glaciers in Alaska? In the World?

Call to Action: There are choices we can make!

Each question from a visitor is like a leaf on the tree...



Climate Change Decision Tree



Each question, regardless of its focus (branch), can lead to a message about stewardship...¹⁰